

### How to download and print the admission ticket

Please download and save your admission ticket and print it out in black and white or color on A4 size paper by the day of the test. Please be sure to bring the printed ticket with you on the day of the test.


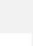
Here's how to download and print: If you do not have a printer at home, proceed to step 2 to save, then proceed to [If you do not own a printer] and print using a multi-function copier at a convenience store. Printing on the multi-function copier is charged.

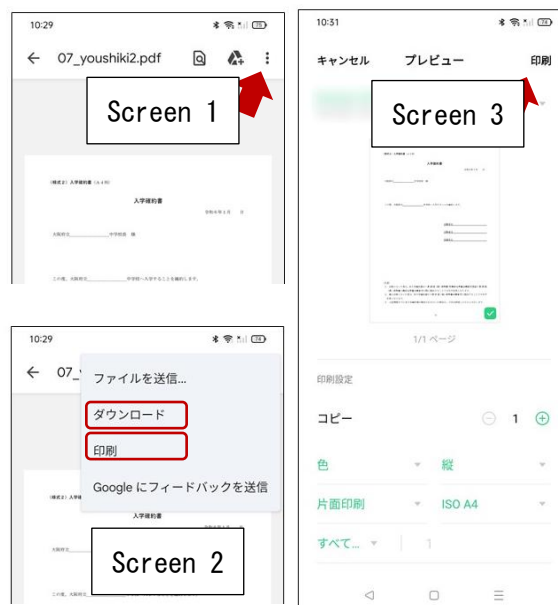
[For computers]

1. When you press the "Download Admission Ticket" button, the admission ticket (PDF file) will be open in a new tab of your browser (Microsoft Edge, Google Chrome, Safari, etc.).
2. To save a PDF file,  
for Windows press Ctrl + s on your keyboard,  
for macOS press ⌘ + s on your keyboard and select a folder.
3. When printing from a printer connected to your computer,  
for Windows press Ctrl + p,  
for macOS ⌘ + p and select the printer.  
Select A4 paper size and print the ticket without scaling, in black and white or color.  
\* For details on how to operate the printer, refer to the manual or the manufacturer's website.

[For smartphones] (The screen differs depending on the model, etc.)

Android:

1. When you press the "Download Admission Ticket" button, the admission ticket (PDF file) will be open in a new tab of your browser (Google Chrome, etc.).
2. [Screen 1] Select  in the upper right and select Download.
3. [Screen 1 & 2] If you're printing from a Wi-Fi printer available for Android, select  in the upper right, select Print. [Screen 3] Select the printer, select black and white or color, A4 for the paper size, and select "Print."


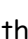


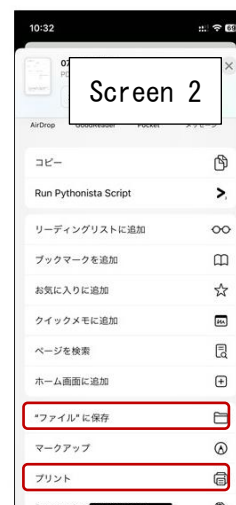
\* Please print without enlarging or shrinking.

\* For details on how to operate the printer, refer to the manual or the manufacturer's website.

# Osaka Prefectural Schools Online Application System Manual

iPhone:

1. When you press the "Download Admission Ticket" button, the admission ticket (PDF file) will be open in a new tab of your browser (Safari, etc.).
2. [Screen 1 & 2] Select the Share button  at the bottom of the screen.  
[Screen 3] Select Save to File, then Save.
3. [Screen 1 & 2] If you're printing a Wi-Fi printer available for iPhone, select the Share button  at the bottom of the screen.
4. [Screen 4] Select the printer, select A4 for the paper size, and select "Print."  
\* Please print without enlarging or shrinking.  
\* For details on how to operate the printer, refer to the manual or the manufacturer's website.



[If you don't own a printer]

1. Please print using a multi-copy machine at a convenience store such as Seven-Eleven or FamilyMart. Printing on the multi-function copier is charged.

\* If you save your admission ticket on your computer, you can bring a PDF file using a USB memory stick and print it, but here we will show you how to upload the data to the Internet and print it using an iPhone.

[In the case of Seven-Eleven]

2. Access the "Easy netprint" web page.  
(<https://www.printing.ne.jp/support/lite/index.html>).

[Screen 1] Select "Register File Now."

3. [Screen 2] After confirming the consent of netprint, Select "Choose File", upload the PDF file.



\* For information on how to upload a PDF file, see How to attach a file.

4. [Screen 3 & 4] The paper size is A4, the color mode is color or black and white, and for the smaller size, select "Never" and select "Register."

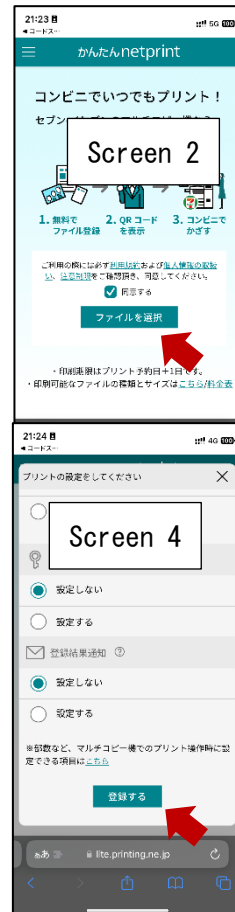
\* Setting a PIN is optional, but you should set it to protect your personal information.

5. [Screen 5] When registration is completed, the print reservation number will be displayed, so make a note of it.

\* In the case of smartphones, you can also use a QR code instead of a reservation number.

6. On the Seven-Eleven multi-copy machine, press the "Print" button and select "Net Print" as the print type.
7. Follow the on-screen instructions and enter the print reservation number in

Step 5. Enter your PIN if it's set, pay the fee, and press "Start Printing" to print.



[FamilyMart]

- [Screen 1 & 2] Access the "Network Print Service" web page.

(<https://networkprint.ne.jp/Lite/>)



After confirming the consent of network print, click "Select File" and select the PDF file to upload.

\* For information on how to upload a PDF file, see How to attach a file.

- [Screen 3 & 4] The paper size is A4, and the original size/fit should be the original size. Select "Register File."

\* Setting a PIN is optional, but you should set it to protect your personal information.

- [Screen 5] When the registration is completed, the user number will be displayed, so make a note of it.

- On the FamilyMart multi-function copier, press the "Print Service" button and select "Network Print" as the print type.

- Follow the on-screen instructions and enter the user number in Step 5. Enter your PIN if it's set, pay the fee, and click "Start Printing" to print.

